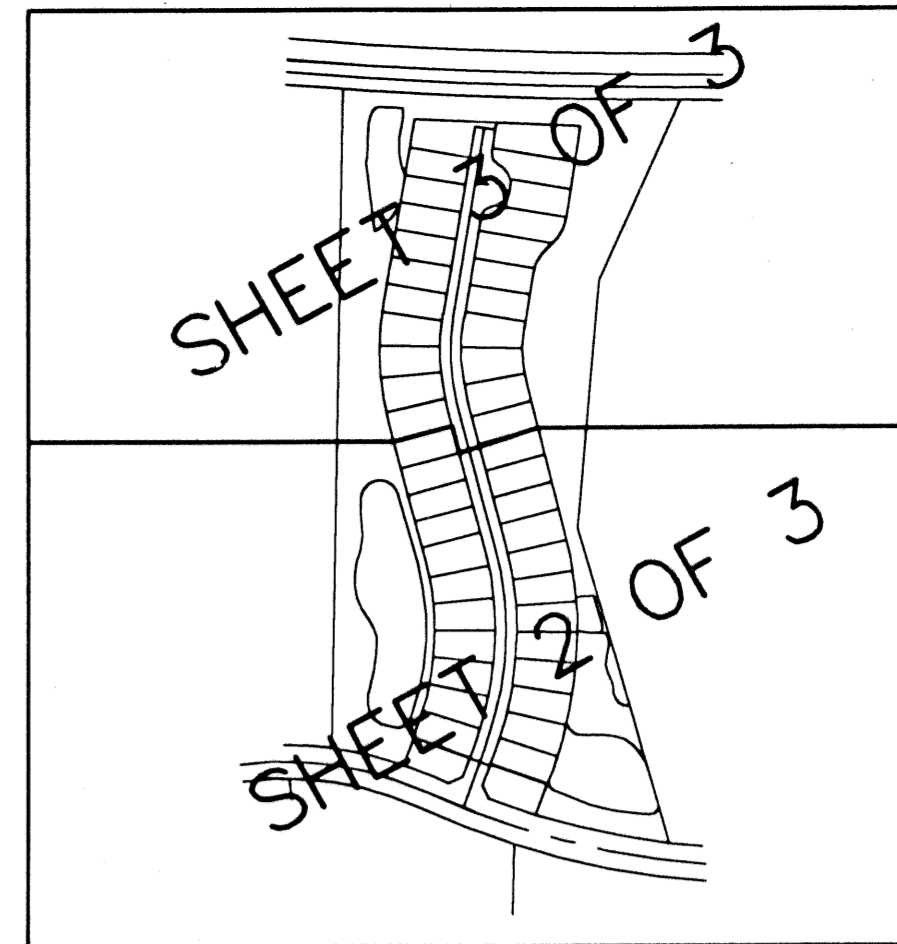


# FRENCHMAN'S RESERVE PCD - PLAT "B"

BEING A REPLAT OF TRACT B, FRENCHMAN'S RESERVE PCD - PLAT ONE  
AS RECORDED IN PLAT BOOK 92, PAGE 11-20,  
PALM BEACH COUNTY, FLORIDA

LYING IN SECTION 31,  
TOWNSHIP 41 SOUTH, RANGE 43 EAST, CITY OF PALM BEACH  
GARDENS, PALM BEACH COUNTY, FLORIDA.

SEPTEMBER, 2002 SHEET 2 OF 3

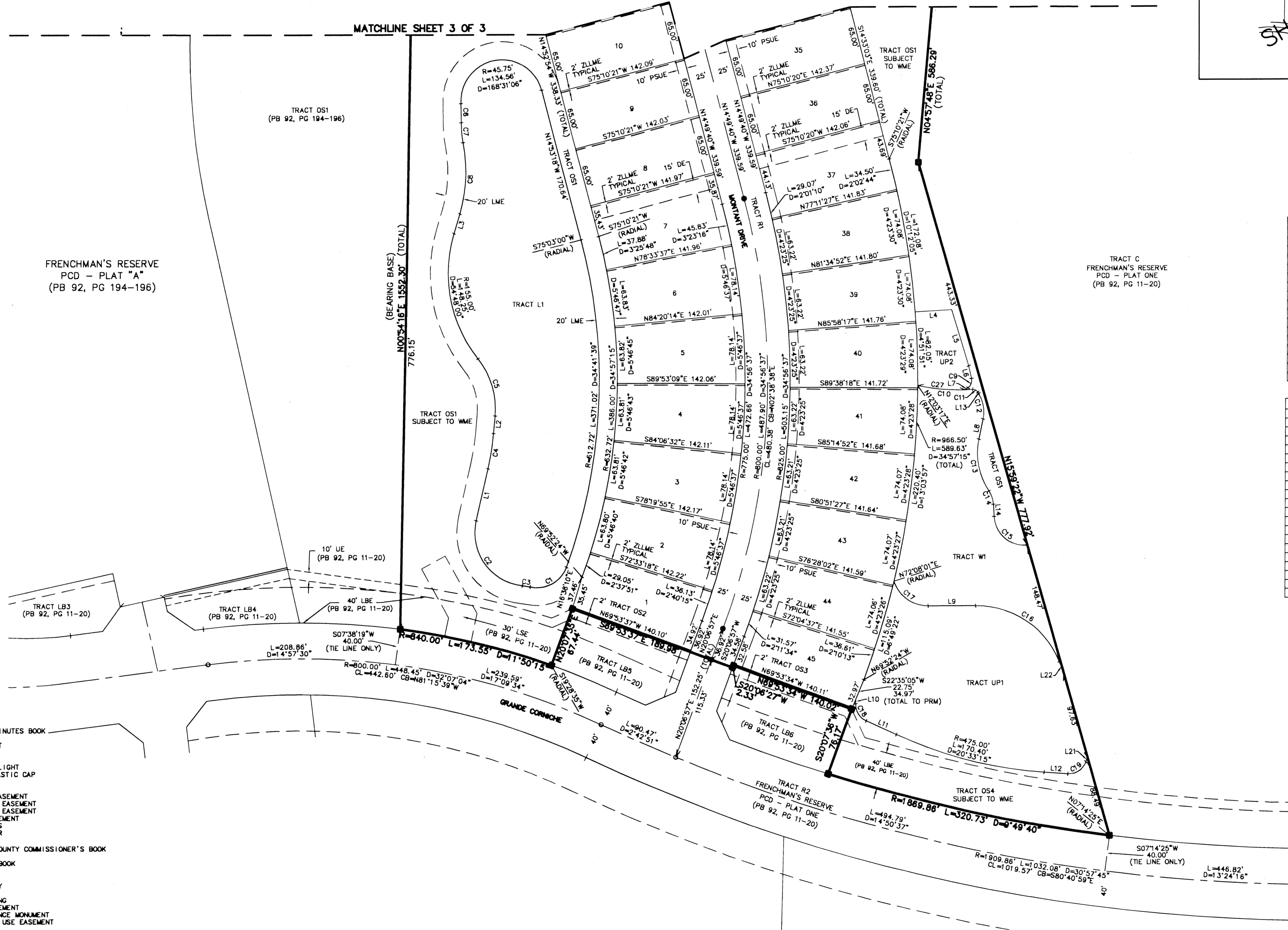
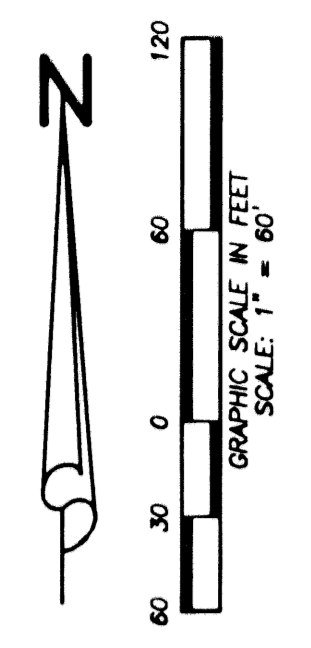


103

STATE OF FLORIDA  
COUNTY OF PALM BEACH  
THIS PLAT WAS FILED FOR  
RECORD AT \_\_\_\_\_ M.  
THIS \_\_\_\_\_ DAY OF \_\_\_\_\_  
A.D. 2002 AND DULY RECORDED  
IN PLAT BOOK \_\_\_\_\_ ON  
PAGES \_\_\_\_\_ AND \_\_\_\_\_

DOROTHY H. WILKEN  
CLERK CIRCUIT COURT

BY: \_\_\_\_\_  
DEPUTY CLERK



LINE	BEARING	LENGTH
L1	S12°36'21"W	59.23
L2	S04°59'23"W	19.76
L3	N18°26'36"E	22.69
L4	N86°04'27"E	40.54
L5	S18°59'48"E	65.50
L6	S12°35'16"E	14.44
L7	S54°38'51"W	3.98
L8	S11°23'46"W	23.11
L9	N89°45'43"E	52.72
L10	S01°47'03"W	5.61
L11	S65°31'12"E	36.89
L12	N86°04'27"W	28.58
L13	S30°02'22"E	2.77
L14	S03°26'52"E	13.69
L21	S20°24'12"W	5.28
L22	S22°10'41"W	13.76

CURVE	RADIUS	DELTA	LENGTH
C1	35.00	82°07'07"	50.16
C2	60.00	95°57'28"	100.49
C3	100.00	51°25'27"	9.10
C4	300.00	7°36'58"	39.88
C5	90.00	43°20'47"	68.09
C6	250.00	4°44'41"	20.70
C7	100.00	12°34'56"	21.96
C8	165.00	27°41'15"	79.73
C9	10.00	67°14'08"	11.73
C10	218.00	16°09'05"	61.45
C11	6.00	63°45'28"	6.68
C12	40.00	41°44'08"	28.14
C13	77.00	45°05'33"	60.60
C14	30.00	30°14'55"	15.84
C15	34.00	91°56'38"	54.56
C16	100.00	68°03'36"	118.79
C17	40.00	72°22'17"	50.52
C18	20.00	67°18'15"	23.49
C19	20.00	73°31'21"	25.66
C27	218.00	13°51'26"	52.72

- LEGEND:**
- (C) = CALCULATED
  - CB = CHORD BEARING
  - CL = CHORD LENGTH
  - CMB = COMMISSIONERS' MINUTES BOOK
  - D = DELTA
  - DE = DRA IMAGE EASEMENT
  - DB = DEED BOOK
  - FND = FOUND
  - FPL = FLORIDA POWER & LIGHT
  - IRC = IRON ROD WITH PLASTIC CAP
  - IP = IRON PIPE
  - L = LENGTH
  - LAE = LIMITED ACCESS EASEMENT
  - LBE = LANDSCAPE BUFFER EASEMENT
  - LME = LAKE MAINTENANCE EASEMENT
  - LSE = LIFT STATION EASEMENT
  - LB = LICENSED BUSINESS
  - LS = LICENSED SURVEYOR
  - (M) = MEASURED
  - MCCB = MINUTES OF THE COUNTY COMMISSIONER'S BOOK
  - MON = MONUMENT
  - ORB = OFFICIAL RECORD BOOK
  - (P) = PLAT
  - PB = PLAT BOOK
  - PBCO = PALM BEACH COUNTY
  - PG = PAGE
  - POB = POINT OF BEGINNING
  - POC = POINT OF COMMENCEMENT
  - PRM = PERMANENT REFERENCE MONUMENT
  - PSUE = PRIVATE SPECIFIC USE EASEMENT
  - R = RADIUS
  - R/W = RIGHT-OF-WAY
  - RPB = ROAD PLAT BOOK
  - SUE = SEACOAST UTILITY EASEMENT
  - (S) = SURVEY
  - WME = WATER MANAGEMENT EASEMENT
  - WSE = WATER AND SEWER EASEMENT
  - UE = UTILITY EASEMENT
  - ZLLME = ZERO LOT LINE MAINTENANCE EASEMENT
  - = SET PK&DISK "PERMANENT CONTROL POINT" "LB#7055"
  - = SET 4"x4" CONCRETE MONUMENT "LB#7055"
  - = FOUND PK&DISK "PERMANENT CONTROL POINT" "LB#7055"

**W** Wantman Group, Inc.  
Engineering ♦ Surveying ♦ Mapping  
901 NORTHPOINT PARKWAY, SUITE 204  
WEST PALM BEACH, FL 33407  
(561) 687-2220 phone (561) 687-1110 fax  
CERT No. 6091 - LB No. 7055

CAD	K:\TOLLBROS\FRENCHMAN\DWG\218PLATB		
REF	K:\TOLLBROS\FRENCHMAN\DWG\218MG01		
FLD	FB.	PG.	JOB 218B
OFF	AJP/MRJ		DATE 3/27/02
CKD	RBP	SHEET 2 OF 3	DWG